

7a Gloucester Terrace Norwood SA

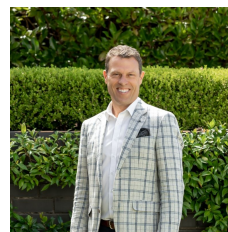
3 2 2

The entrance passageway has generous dimensions conveying a feeling of effortless space - a theme that recurs throughout the property.

The primary bedroom suite is located off the passageway at the front of the house. Pitched cathedral ceilings with clerestory windows draw in the southern light with French doors open to the front streetscape. The luxury elements become evident in the large walk-in robe and ensuite bathroom with marble flecked tiled floors, double inlay sinks with Italian marble tops, 2-pac cabinetry and Zucchetti fittings.

Further down the polished Ironbark timber hallway, you arrive at the north-facing, open plan living space. Light pours in through the commercial-style bi-fold glass doors, which fold back to connect the rear paved courtyard garden

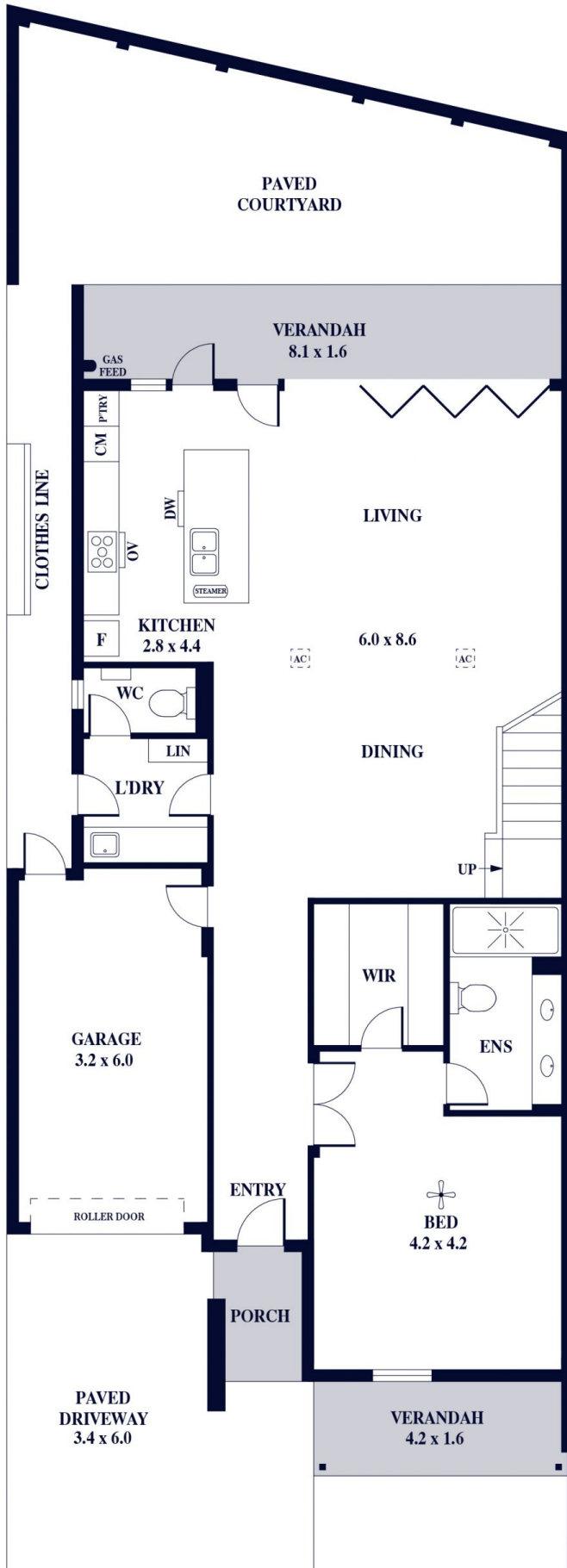
Land Size : 240 sqm
View : <https://www.alexanderrealestate.com.au/sale/sa/eastern-suburbs/norwood/residential/townhouse/7515459>



Steve Alexander
0411 755 985

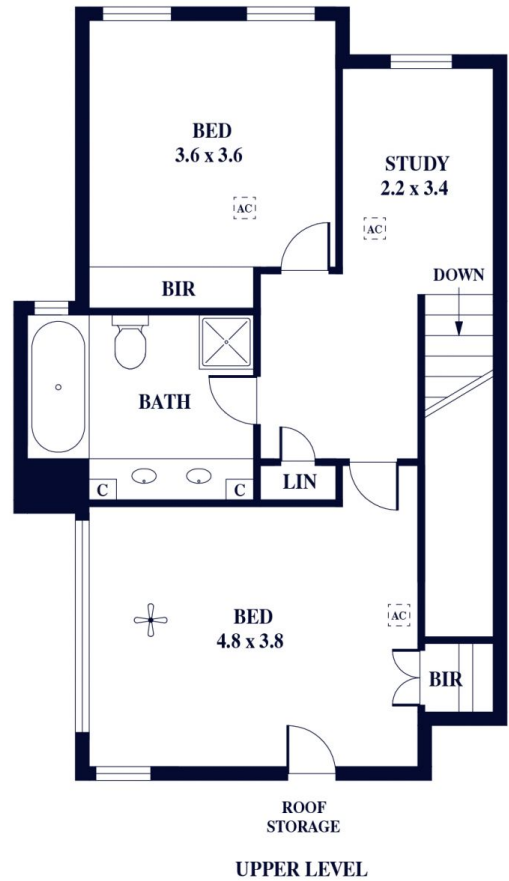


Tim Thredgold
0418 817 407



GROUND LEVEL

Internal - 213.6 SQM
 External - 65.6 SQM
 Total - 279.2 SQM



UPPER LEVEL

