



3a The Crescent Marryatville SA

5 🚗 2 🚗 2 🚗

Beyond the brush fence lies a substantial solid brick home, originally constructed in 1987. It is surrounded by gorgeous gardens that create a serene and private retreat. Offering the charm of peaceful country living, it is just a short walk from Burnside Village and The Parade.

Expertly renovated by Outset Design, this home features a stylish and innovative layout with two distinct wings for adults and children. At the centre is a fabulous kitchen and family room connecting to an elevated outdoor entertaining area.

The spacious main bedroom boasts a wall of built-in cupboards, a generous ensuite bathroom, and a light-filled study and parent retreat, equipped with built-in desk

[For full version visit the website](https://www.alexanderrealestate.com.au/sale/sa/eastern-suburbs/marryatville/residential/house/7545305)

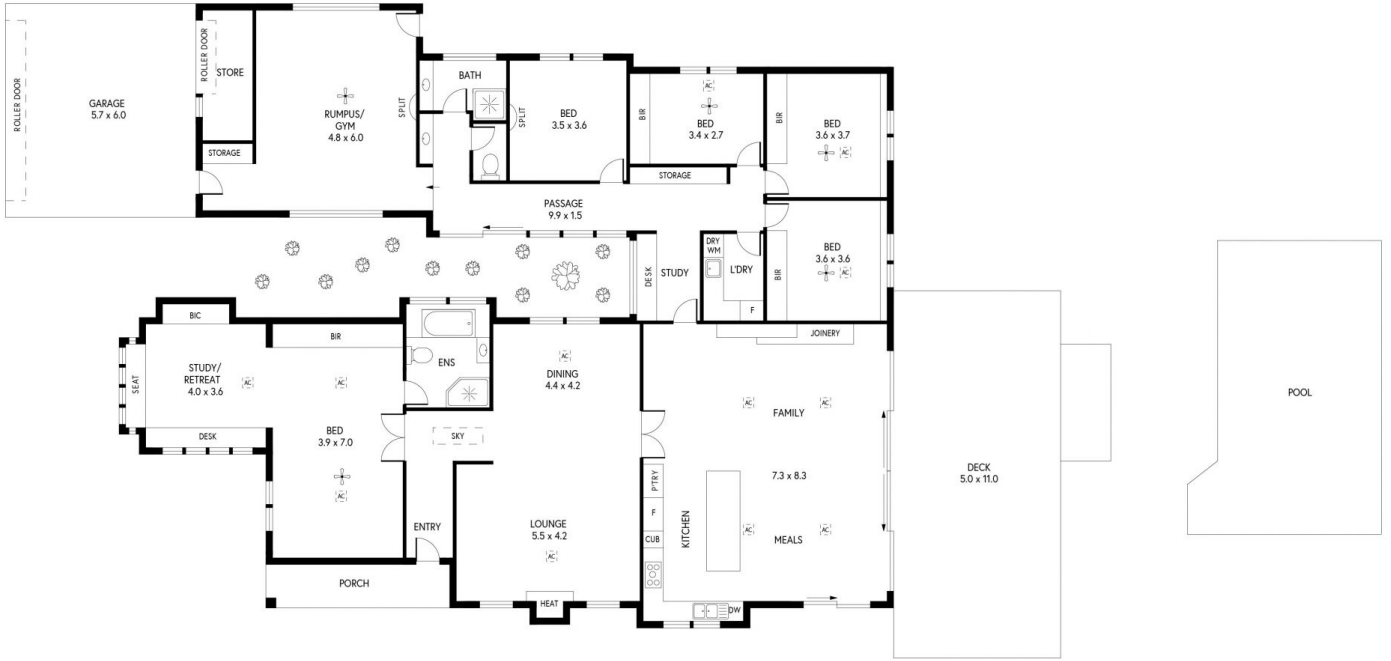
Type : House
Price : Offers Close - 29 October at 12pm
Land Size : 1365 sqm
View : <https://www.alexanderrealestate.com.au/sale/sa/eastern-suburbs/marryatville/residential/house/7545305>



Penny Riggs
0439669965



Steve Alexander
0411 755 985



3A THE CRESCENT, MARRYATVILLE

	INTERNAL	- 316.4 SQM
	EXTERNAL	- 96.4 SQM
	TOTAL	- 412.8 SQM

PRODUCED BY CLIQUECREATIVE