



1/3 Cleland Avenue Unley SA

2 2 2

Located between Unley Road and King William Road, this 2-storey townhouse combines convenience and comfort.

The north-facing open plan living area and modern kitchen are bathed in natural light streaming through the large windows. Step out onto the tiled balcony through sliding glass doors, which provides a delightful space for alfresco dining or enjoying your morning coffee.

The kitchen has stainless steel appliances, including a gas cooktop, under-bench oven, and dishwasher. It is complemented by a double sink and twin-door pantry.

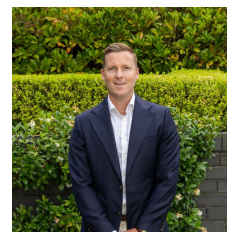
On the ground floor, a double bedroom boasts built-in robes and an ensuite with a view of the private front

Type : Townhouse

View : <https://www.alexanderrealestate.com.au/sale/sa/eastern-suburbs/unley/residential/townhouse/8036074>

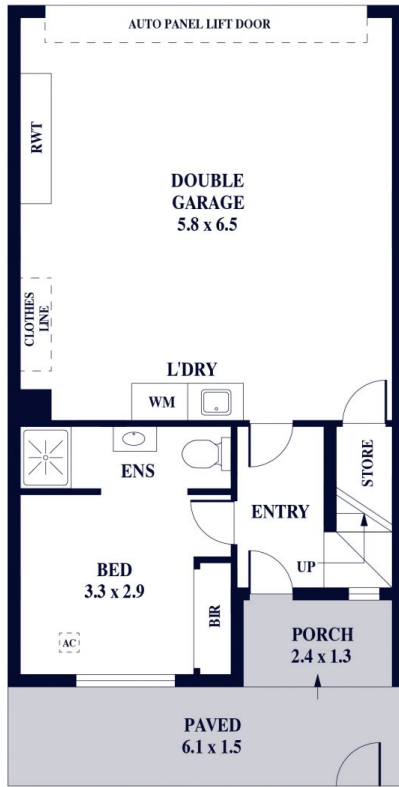


Steve Alexander
0411 755 985

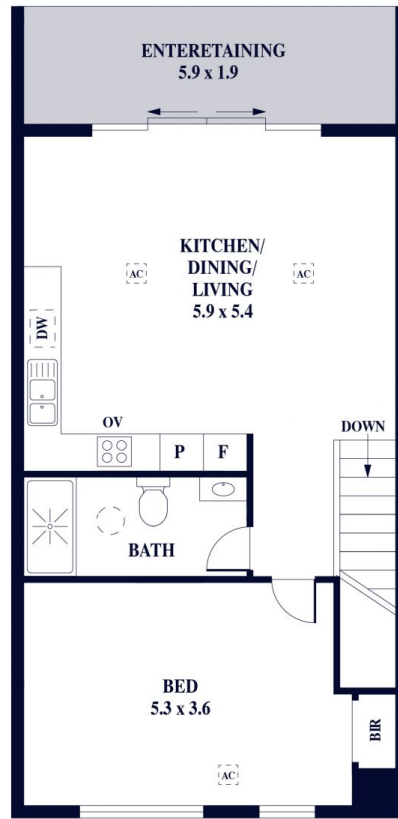


Jake Tidmarsh
0411 221 273

[For full version visit the website](https://www.alexanderrealestate.com.au)



GROUND FLOOR



FIRST FLOOR

Internal - 160.0 SQM
 External - 23.0 SQM
 Total - 183.0 SQM

