



## 23a Carunta Street Wattle Park SA

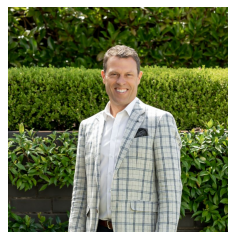
4 2 1

Wattle Park is known for its stunning foothills, proximity to the city, walking trails, local shopping, and prestigious schools. This wonderful family home takes advantage of the elevated suburb and allotment to bask in the north-facing sunlight, which finds its way into every corner.

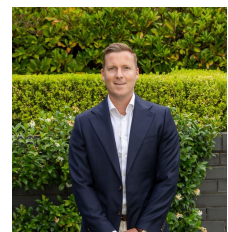
Spanning two levels, the home boasts a flexible layout designed to evolve with your family's needs. It offers dual-purpose rooms ideal for living and working from home. An external timber decking staircase leads to the home's entrance and front balcony.

Upon entering, the light-filled living room welcomes you with a gas heater framed by built-in cupboards and bookshelves. A corner window provides a panoramic view over the treetops. Adjacent, the dining room features sliding glass doors opening onto the entertainer's deck.

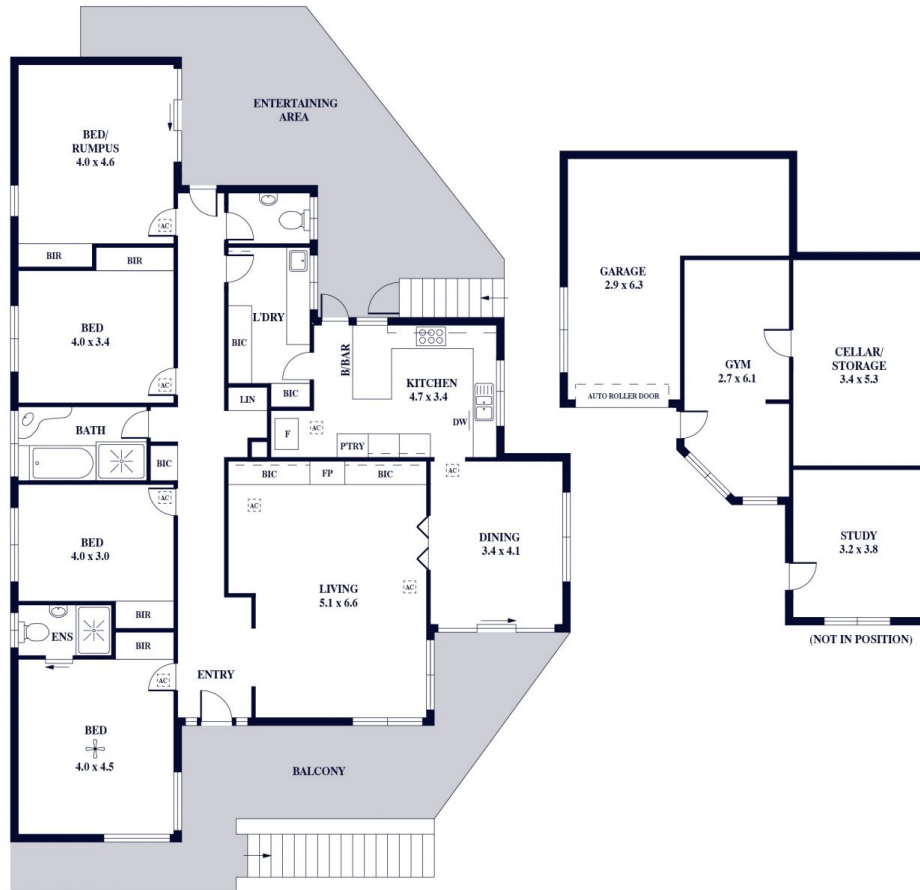
**Land Size** : 622 sqm  
**View** : <https://www.alexanderrealestate.com.au/sale/sa/eastern-suburbs/wattle-park/residential/house/8075836>



**Steve Alexander**  
0411 755 985



**Jake Tidmarsh**  
0411 221 273



(NOT IN POSITION)

Internal - 272.9 SQM  
 External - 71.8 SQM  
 Total - 344.7 SQM

