



6 Fernleigh Avenue Beaumont SA

4 3 2

Architecturally designed by Girardi Design and built by Klemm Homes to the highest standard, this 2017 executive home offering over 300 sqm of accommodation including two master suites across both levels is the combination of opulence, luxury and every imagination of family practicality to deliver the ultimate lifestyle opportunity.

Featuring sensational proportions, classic design, bespoke finishes, meticulous attention to details and sun-drenched spaces, this home is a masterpiece of modern elegance. Upon entering, the striking reception hall is highlighted by soaring ceilings and gallery-like interior grandeur flowthrough to the rear living zones. Nothing has been compromised to create an environment that is equally beautiful and functional. Cleverly designed accommodation

Type : House
Price : Contact Agent
Land Size : 442 sqm
View : <https://www.alexanderrealestate.com.au/sale/sa/eastern-suburbs/beaumont/residential/house/8125159>

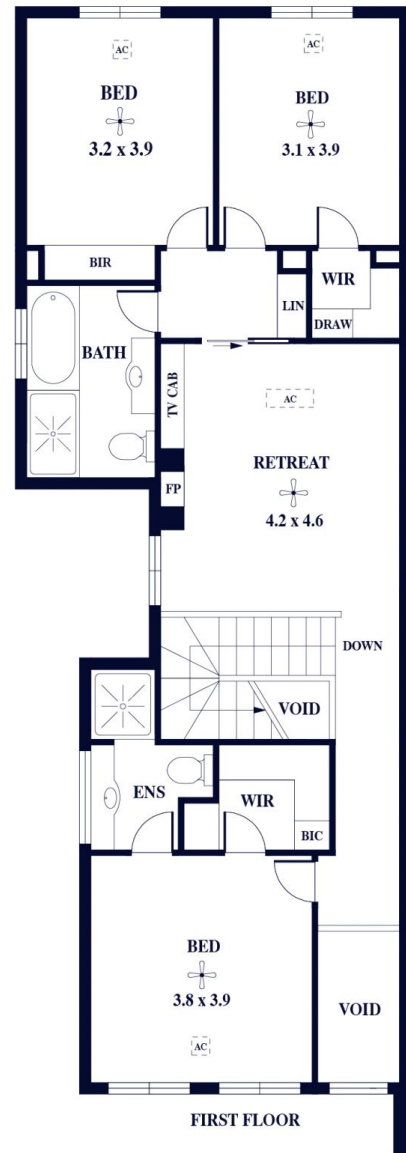
[For full version visit the website](https://www.alexanderrealestate.com.au)



Tim Thredgold
0418 817 407



Megan Thredgold
0417 802 997



Internal - 247.9 SQM
External - 81.9 SQM
Total - 329.8 SQM

